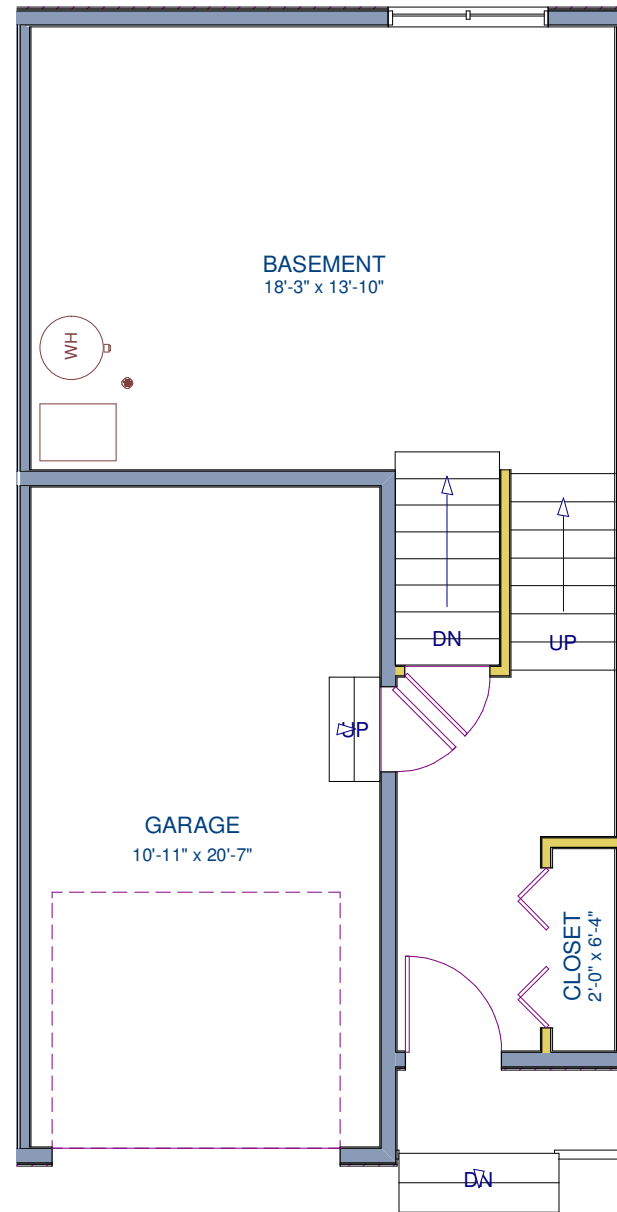


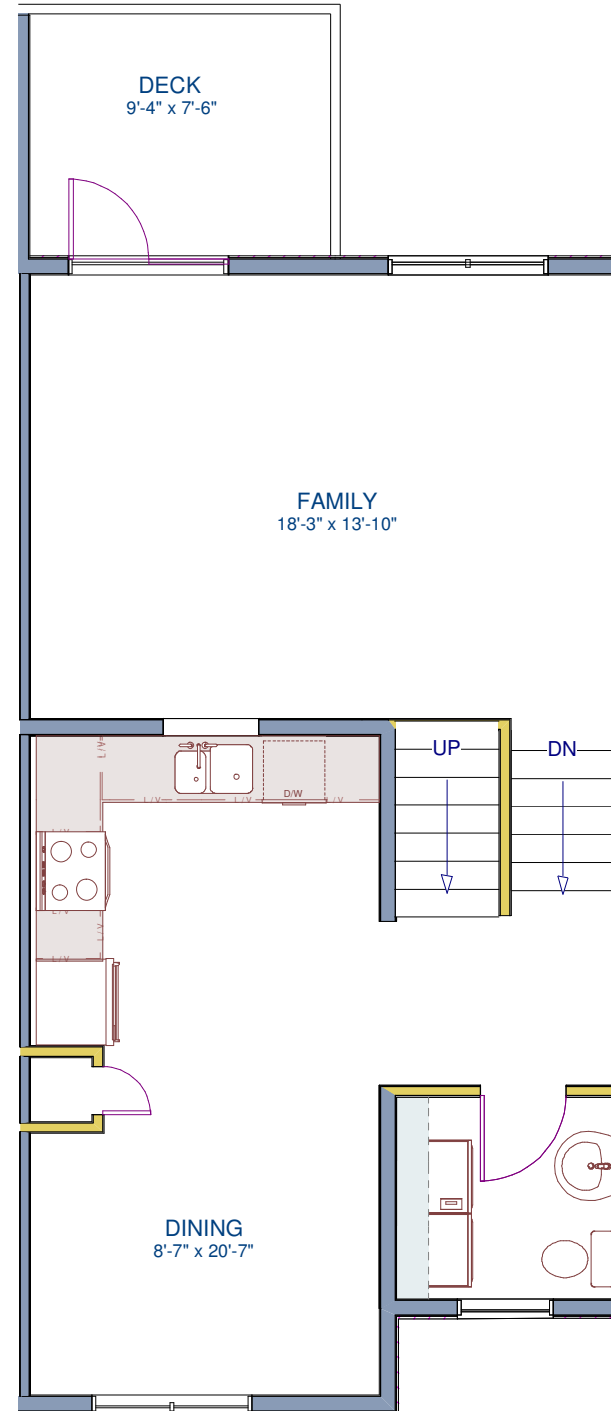
## Plan B Standard (1455 sq. ft)

- Three Bedrooms with 2.5 Baths
- Master Bedroom with Large Walk-in Closet
- Bedroom 2 with Walk-in Closet
- Main Floor Laundry
- 12 Feet Ceiling Family Room
- Large Basement Window
- Option Basement Finishing with 274 sq. ft

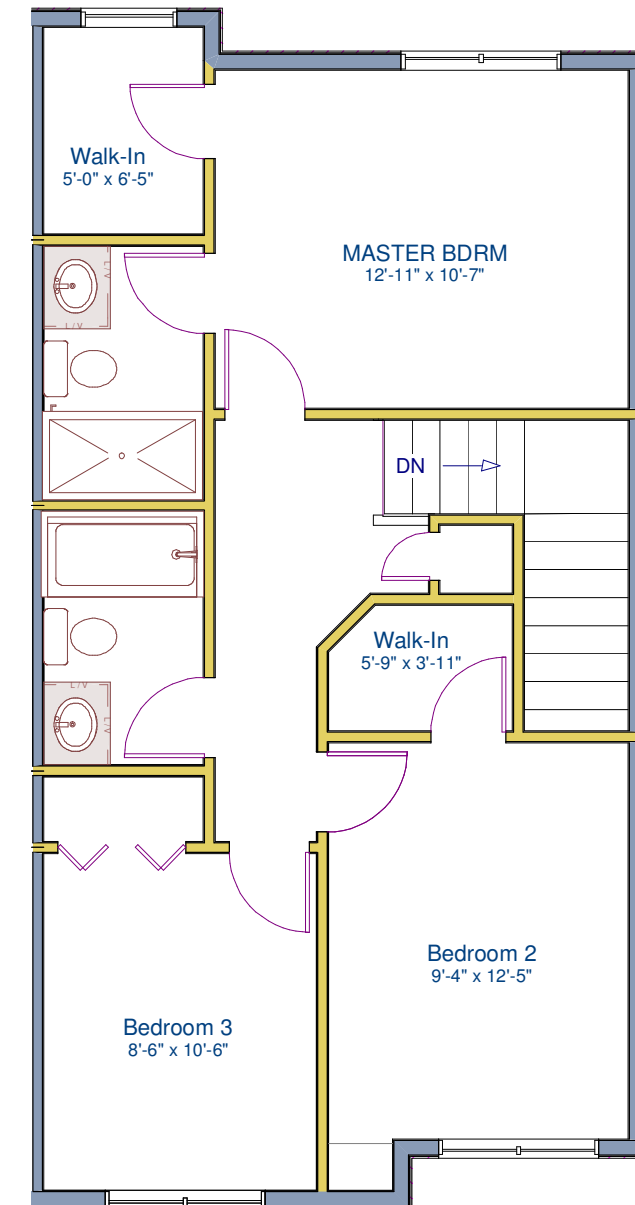
- Maple shaker cabinets
- Granite countertop throughout in kitchen and washrooms
- Kohler plumbing fixtures



Entrance Floor  
114 sq. ft Finished area



Main Floor  
661 sq. ft



Upper Floor  
680 sq. ft

**Notes: Room sizes may vary between homes. Baydo Development Corporation reserves the right to modify design and specifications without notice.**