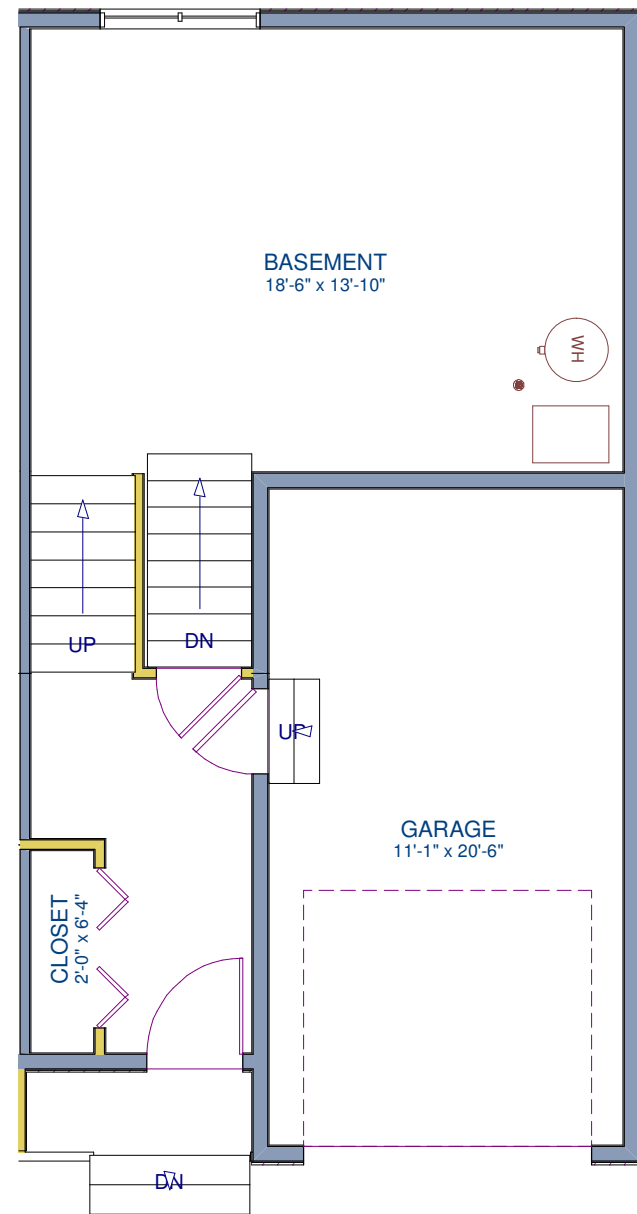


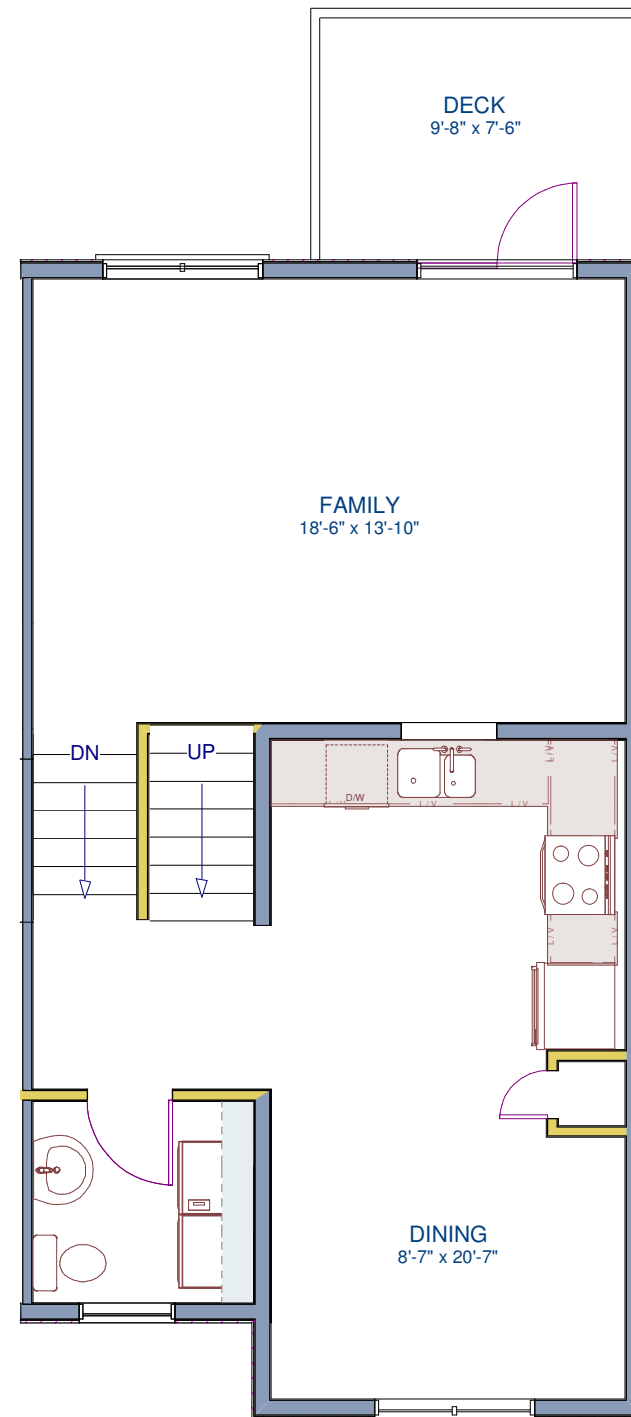
Plan C Standard (1477 sq. ft)

- Two Master Bedrooms with 2.5 Baths
- Master Bedroom 1 with Double Walk-in Closets
- Master Bedroom 2 with Walk-in Closet
- Main Floor Laundry
- 12 Feet Ceiling Family Room
- Large Basement Window
- Option Basement Finishing with 280 sq. ft

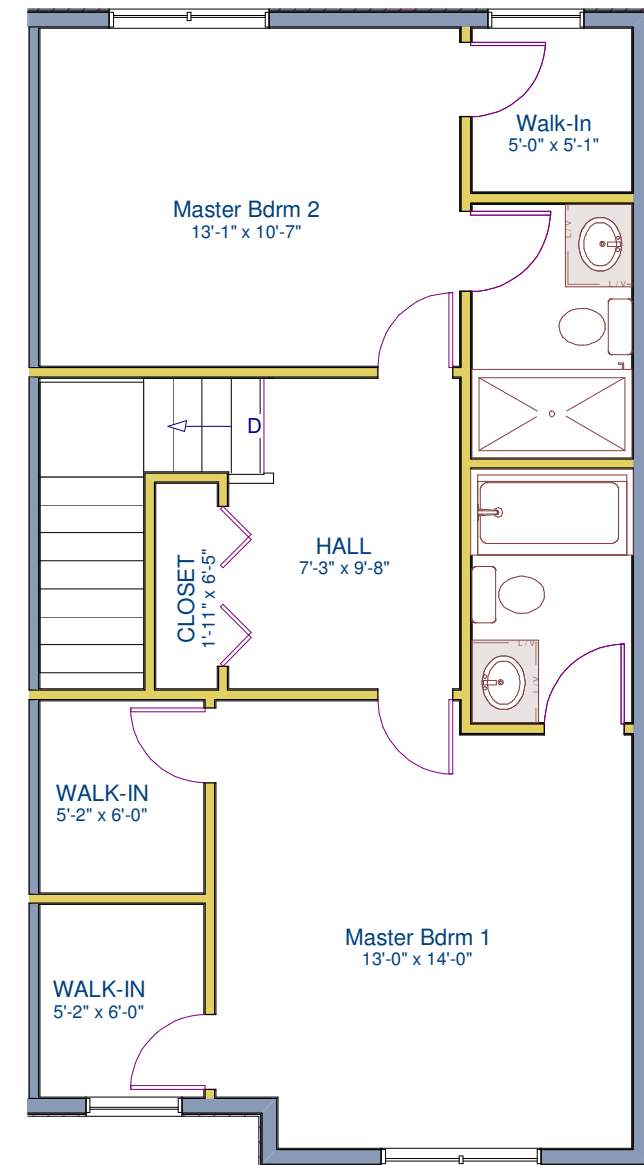
- Maple shaker cabinets
- Granite countertop throughout in kitchen and washrooms
- Kohler plumbing fixtures



Entrance Floor
115 sq. ft Finished area



Main Floor
676 sq. ft



Upper Floor
686 sq. ft

Notes: Room sizes may vary between homes. Baydo Development Corporation reserves the right to modify design and specifications without notice.