

# FOREST RIDGE



## LUXURY TOWNHOMES IN EVERGREEN

315 ZARY ROAD

### INTERIOR UNIT

1804 SQ. FT.

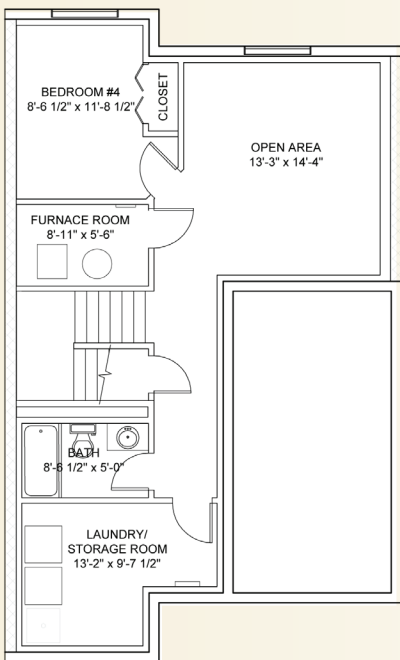
- Maple shaker cabinets with soft-close hinges
- Kohler plumbing fixtures used throughout
- Wood and spindle railing package available
- Select units have a separate backyard
- 9 ft. ceilings on the main floor
- Fireplace (optional)
- All bedrooms wired for internet and cable
- Three bedrooms with 2.5 bathrooms
- Master bedroom features tray ceiling, 9 x 8 ft. walk-in closet, and ensuite bathroom with dual vanity
- Finished basement is optional
- Oversized, 8 ft. garage door



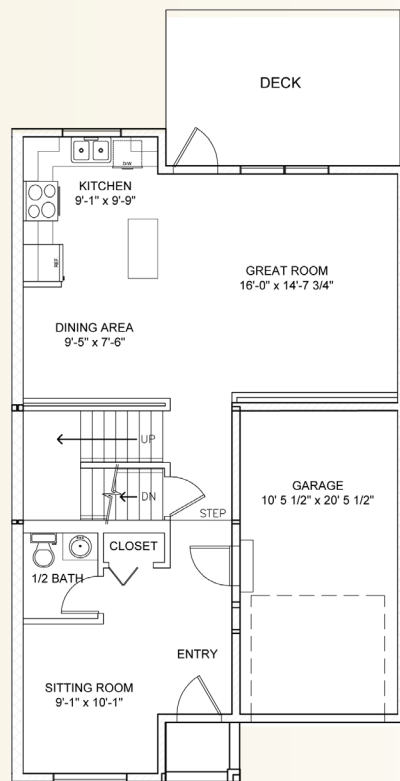
**Baydo**

**Development Corporation**

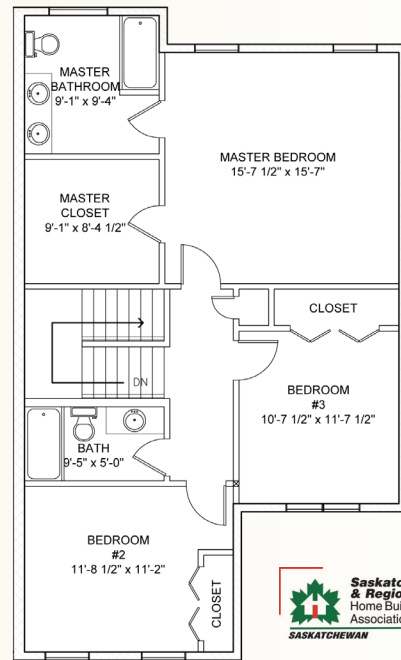
[www.baydo.ca](http://www.baydo.ca)



Basement - 810 sq. ft.



Main Floor - 810 sq. ft.



Second Floor - 994 sq. ft.

